

Product Catalogue

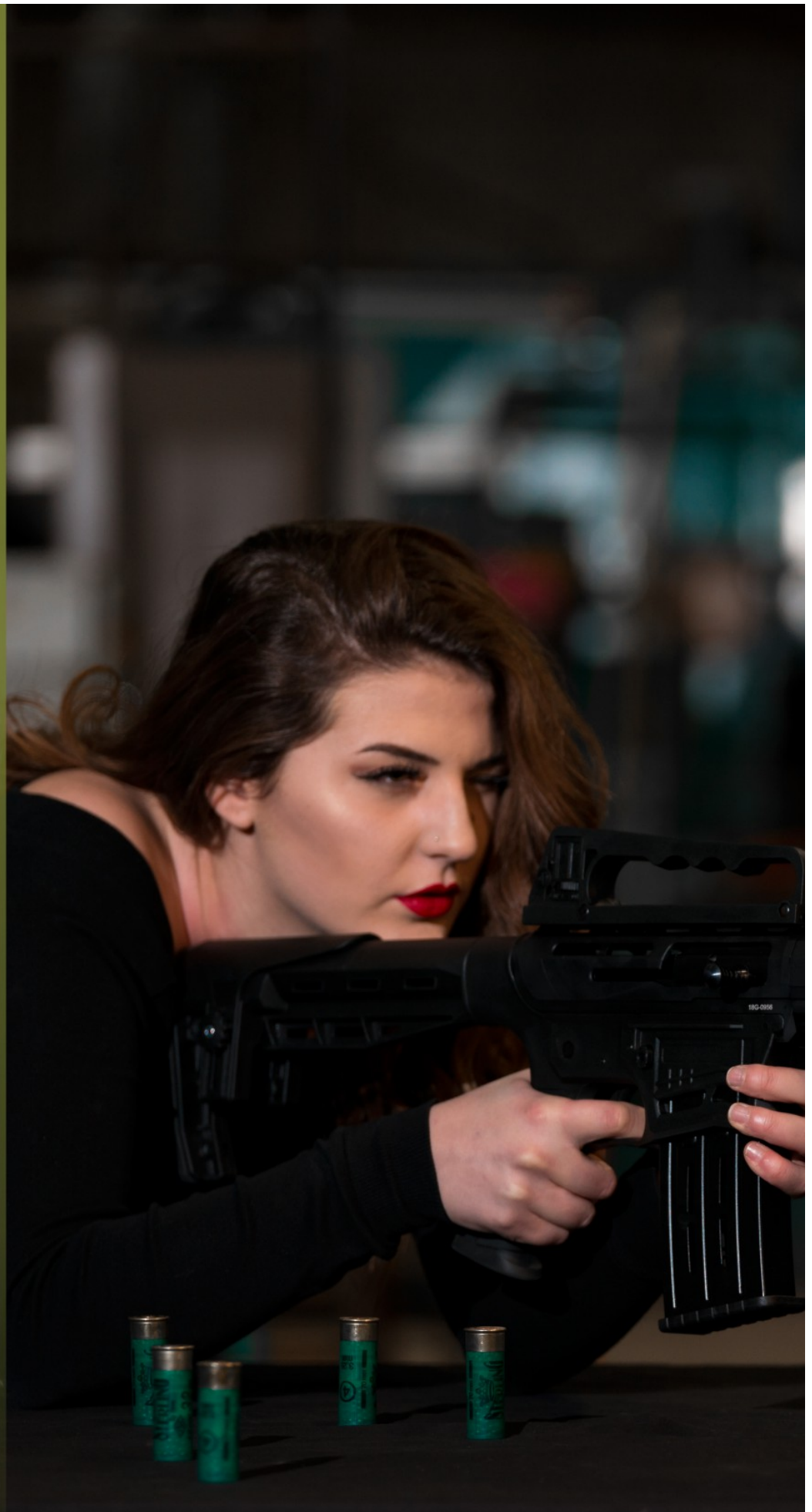
As the Set Arms team
we are experiencing
the excitement
of sharing the knowledge and
experience accumulated over
half a century of production.



SET ARMS

www.setarms.com

Always Professional!



Our Journey was started in the 1970s and has grown day by day. Our company was established as one of the first 3 companies in the region by Mehmet Sütcü, one of the few craftsmen who made a distinguished name for himself with his determination, talent and mastery, working in various branches of shotgun manufacturing at an early age. Mehmet Sütcü learned the honing job to learn how to make a shotgun barrel from elementary school years to the military service age and became a master at this job. Our master, who is aware of his determination and skill after military service and wants to learn the production of other equipment of the shotgun, has started to produce stock. Our master, who established a small workplace, also produced his first single barrel shotgun in this workplace. As of 2007, mass production started with CNC machining technology by taking the investment decision.

Barrels are made of 4140 drilled steel which has been exposed to crack tests. Barrels are joined and ribs are mounted by silver welding process in a high temperature tunnel oven.

The inner diameters and linearity are controlled one by one. This is the reason why our guns are highly successful during the shooting pattern tests. It is an honor for us to be granted with the international awards after the tests. Receivers are made of 4140 steel and aluminum alloy. Stocks and fore ends are produced from selected Turkish walnut trees graded with 2, 3, 4 and 5 which are dried in kilns. After having the parts manufactured by modern machines, the talented gunsmiths of Set Arms start assembling the guns with a great care yet without using the file during the assembly process. Each assembled gun is subjected to endurance and functionality tests. 1550 bar high pressured test cartridges are used for shooting tests. Each gun is packed after it has been verified that they conform to TSE and CIP standards.




Orelben
TECHNICAL DETAILS

Gauge	12 ga
Choke	Tactical Choke
Chamber	3" / 76 mm
Flat	Aliminium
Weight	4.10 KG / 9.03 lbs
Overall Length	42" / 107 cm
Barrel Length	20" / 51 cm
L.O.P	36.5 cm/14.8"
System	Semi Automatic 2+1 / 5+1 / 10+1
Stock	Tactical Synthetic Stock


Nieven
TECHNICAL DETAILS

Gauge	12 ga
Choke	Tactical Choke
Chamber	3" / 76 mm
Flat	Aliminium
Weight	4.50 KG / 9.92 lbs
Overall Length	42" / 107 cm
Barrel Length	20" / 51 cm
L.O.P	36.5 cm/14.8"
System	Magazine Fed 2+1 / 5+1 / 10+1
Stock	Adjustable or Fixed Tactical Stock


Jaonos
TECHNICAL DETAILS

Gauge	12 ga
Choke	Tactical Choke
Chamber	3" / 76 mm
Flat	Aliminium
Weight	4.30 KG / 9.47 lbs
Overall Length	42" / 107 cm
Barrel Length	20" / 51 cm
L.O.P	36.5 cm/14.8"
System	Magazine Fed 2+1 / 5+1 / 10+1
Stock	Adjustable or Fixed Tactical Stock


Legolas
TECHNICAL DETAILS

Gauge	12 ga
Choke	Tactical Choke
Chamber	3" / 76 mm
Flat	Aliminium
Weight	4.30 KG / 9.47 lbs
Overall Length	42" / 107 cm
Barrel Length	20" / 51 cm
L.O.P	36.5 cm/14.8"
System	Magazine Fed 2+1 / 5+1 / 10+1
Stock	Adjustable or Fixed Tactical Stock

Tactical Magfed

SET ARMS



TECHNICAL DETAILS

Gauge	12 ga
Choke	Tactical Choke
Chamber	3" / 76 mm
Flat	Aliminium
Weight	4,50 KG / 9.92 lbs
Overall Length	48" / 122 cm
Barrel Length	22" / 56 cm
L.O.P	36.5 cm/14.8"
System	Magazine Fed (2+1) (5+1)
Stock	Tactical Synthetic Stock

Fusion



TECHNICAL DETAILS

Gauge	12 ga
Choke	Tactical Choke
Chamber	3" / 76 mm
Flat	Aliminium
Weight	4,20 KG / 9.25 lbs
Overall Length	42" / 107 cm
Barrel Length	20" / 51 cm
L.O.P	36.5 cm/14.8"
System	Magazine Fed - 2+1 / 5+1
Stock	Tactical Fixed Stock

Bowman



TECHNICAL DETAILS

Gauge	12 ga
Choke	Tactical Choke
Chamber	3" / 76 mm
Flat	Aliminium
Weight	3,50 KG / 7.71 lbs
Overall Length	31" / 79 cm
Barrel Length	20" / 51 cm
L.O.P	36.5 cm/14.8"
System	Magazine Fed - 2+1 / 5+1
Stock	Tactical Fixed Stock

Pulse



TECHNICAL DETAILS

Gauge	12 ga
Choke	Tactical Choke
Chamber	3" / 76 mm
Flat	Aliminium
Weight	4,20 KG / 9.25 lbs
Overall Length	42" / 107 cm
Barrel Length	20" / 51 cm
L.O.P	14,8" / 36,5 cm
System	Magazine Fed Semi Auto - 2+1 / 5+1 (Comes with 2 types magazine sets)
Stock	Tactical Fixed Stock

Jaonos V


Maeven
TECHNICAL DETAILS

Gauge	12 ga / 20 ga
Choke	Mobil Choke
Chamber	3" / 76 mm
Flat	Aliminium
Weight	3.10 KG / 6.83 lbs
Overall Length	49" / 125 cm
Barrel Length	28" / 71 cm
L.O.P	36.5 cm/14.8"
System	Semi Automatic 2+1 / 4+1 / 7+1
Stock	Turkish Walnut


Merilimen
TECHNICAL DETAILS

Gauge	12 ga
Choke	Tactical Choke
Chamber	3" / 76 mm
Flat	Aliminium
Weight	3.50 KG / 7.71 lbs
Overall Length	42" / 107 cm
Barrel Length	20" / 51 cm
L.O.P	36.5 cm/14.8"
System	Semi Automatic 4+1 / 7+1
Stock	Tactical Synthetic


Golwendaer
TECHNICAL DETAILS

Gauge	12 ga
Choke	Mobil Choke
Chamber	3" / 76 mm
Flat	Aliminium
Weight	3.20 KG / 7.05 lbs
Overall Length	49" / 125 cm
Barrel Length	28" / 71 cm
L.O.P	36.5 cm/14.8"
System	Semi Automatic 2+1 / 4+1 / 7+1
Stock	Synthetic


Laegnis
TECHNICAL DETAILS

Gauge	12 ga
Choke	Mobil Choke
Chamber	3" / 76 mm
Flat	Aliminium
Weight	3.20 KG / 7.05 lbs
Overall Length	49" / 125 cm
Barrel Length	28" / 71 cm
L.O.P	36.5 cm/14.8"
System	Semi Automatic 2+1 / 4+1 / 7+1
Stock	Fine Turkish Walnut

Semi Automatic

SET ARMS



Toross

TECHNICAL DETAILS

Gauge	12 ga
Choke	Mobil Choke
Chamber	3" / 76 mm
Flat	Aliminium
Weight	3.10 KG / 6.83 lbs
Overall Length	49" / 125 cm
Barrel Length	28" / 71 cm
L.O.P	36.5 cm/14.8"
System	Semi Automatic 2+1 / 4+1 / 7+1 Inertia driven system
Stock	Fine Turkish Walnut



Aragorn

TECHNICAL DETAILS

Gauge	12 ga
Choke	Multi Choke
Chamber	3" / 76 mm
Flat	Aliminium
Weight	3.10 KG / 6.83 lbs
Overall Length	49" / 125 cm
Barrel Length	28" / 71 cm
L.O.P	36.5 cm/14.8"
System	Semi Automatic 4+1 / 7+1
Stock	Turkish Walnut



Arwen

TECHNICAL DETAILS

Gauge	12 ga
Choke	Mobil Choke
Chamber	3" / 76 mm
Flat	Aliminium
Weight	3.10 KG / 6.83 lbs
Overall Length	42" / 107 cm
Barrel Length	20" / 51 cm
L.O.P	36.5 cm/14.8"
System	Semi Automatic 5+1 / 7+1
Stock	Synthetic


Tico
TECHNICAL DETAILS

Gauge	12 ga
Choke	Multi Choke
Chamber	3" / 76 mm
Flat	Aliminium
Weight	2.60 KG / 5.73 lbs
Overall Length	24" / 61 cm
Barrel Length	13" / 33 cm
L.O.P	36.5 cm/14.8"
System	Recolt Spring Pump Action 2+1 4+1
Stock	Pistol Grip


Vinny
TECHNICAL DETAILS

Gauge	12 ga
Choke	Multi Choke
Chamber	3" / 76 mm
Flat	Aliminium
Weight	2.60 KG / 5.73 lbs
Overall Length	35" / 89 cm
Barrel Length	13" / 33 cm
L.O.P	36.5 cm/14.8"
System	Recolt Spring Pump Action 2+1 4+1
Stock	Adjustable or Fixed Synthetic Stock


Benny
TECHNICAL DETAILS

Gauge	12 ga
Choke	Multi Choke
Chamber	3" / 76 mm
Flat	Aliminium
Weight	2.60 KG / 5.73 lbs
Overall Length	35" / 89 cm
Barrel Length	13" / 33 cm
L.O.P	36.5 cm/14.8"
System	Recolt Spring Pump Action 2+1 4+1
Stock	Tactical Synthetic Stock


Bowat
TECHNICAL DETAILS

Gauge	12 ga
Choke	Multi Choke
Chamber	3" / 76 mm
Flat	Aliminium
Weight	3.00 KG / 6.61 lbs
Overall Length	42" / 107 cm
Barrel Length	20" / 51 cm
L.O.P	36.5 cm/14.8"
System	Recolt Spring Pump Action 4+1 7+1
Stock	Tactical Synthetic Stock

Pump Action

SET ARMS



Fifi

TECHNICAL DETAILS

Gauge	12 ga
Choke	Tactical Choke
Chamber	3" / 76 mm
Flat	Aliminium
Weight	3.00 KG / 6.61 lbs
Overall Length	42" / 107 cm
Barrel Length	20" / 51 cm
L.O.P	36.5 cm/14.8"
System	Recolt Spring Pump Action 2+1 / 4+1 / 7+1
Stock	Synthetic



Chee-Chee

TECHNICAL DETAILS

Gauge	12 ga
Choke	Multi Choke
Chamber	3" / 76 mm
Flat	Aliminium
Weight	3.00 KG / 6.61 lbs
Overall Length	42" / 107 cm
Barrel Length	20" / 51 cm
L.O.P	36.5 cm/14.8"
System	Recolt Spring Pump Action 4+1 / 7+1
Stock	Fine Turkish Walnut



Hippi

TECHNICAL DETAILS

Gauge	12 ga
Choke	Multi Choke
Chamber	3" / 76 mm
Flat	Aliminium
Weight	2.60 KG / 5.73 lbs
Overall Length	23" / 58 cm
Barrel Length	13" / 33 cm
L.O.P	36.5 cm/14.8"
System	Recolt Spring Pump Action 2+1 4+1
Stock	Handle Grip



Shawnee

TECHNICAL DETAILS

Gauge	12 ga
Choke	Multi Choke
Chamber	3" / 76 mm
Flat	Aliminium
Weight	3.00 KG / 6.61 lbs
Overall Length	42" / 107 cm
Barrel Length	20" / 51 cm
L.O.P	14,8" / 36,5 cm
System	Recolt Spring Pump Action 4+1 / 7+1
Stock	Synthetic

Pump Action


Bowat Camo

* Camouflage color can be change according to request.

TECHNICAL DETAILS

Gauge	12 ga / 20 ga
Choke	Multi Choke
Chamber	3" / 76 mm
Flat	Aliminium
Weight	3.00 KG / 6.61 lbs
Overall Length	42" / 107 cm
Barrel Length	20" / 51 cm
L.O.P	36.5 cm/14.8"
System	Recolt Spring Pump Action 4+1 7
Stock	Tactical Synthetic


Nino

TECHNICAL DETAILS

Gauge	12 ga
Choke	Multi Choke
Chamber	3" / 76 mm
Flat	Aliminium
Weight	3.00 KG / 6.61 lbs
Overall Length	49" / 125 cm
Barrel Length	28" / 71 cm
L.O.P	36.5 cm/14.8"
System	Pump Action 2+1 / 4+1 / 7+1
Stock	Fine Turkish Walnut


Sabre

TECHNICAL DETAILS

Gauge	12 ga
Choke	-
Chamber	3" / 76 mm
Flat	Aliminium
Weight	3.00 KG / 6.61 lbs
Overall Length	26" / 66 cm
Barrel Length	16" / 41 cm
L.O.P	14,8" / 36,5 cm
System	Pump action (4+1)
Stock	Synthetic Stick Hand Grip

Lever Action


El Pacino

TECHNICAL DETAILS

Gauge	12 ga
Choke	Multi Choke
Chamber	3" / 76 mm
Flat	Aliminium
Weight	3.30 KG / 7.27 lbs
Overall Length	42" / 107 cm
Barrel Length	20" / 51 cm
L.O.P	36.5 cm/14.8"
System	Lever Action 4+1
Stock	Fine Turkish Walnut


Rizzi

TECHNICAL DETAILS

Gauge	410 Ga
Choke	Multi Choke
Chamber	3" / 76 mm
Flat	Forged Steel
Weight	2.20 KG / 4.85 lbs
Overall Length	45" / 114 cm
Barrel Length	28" / 71 cm
L.O.P	36.5 cm/14.8"
System	Injector & Selector
Stock	Synthetic


Vito

TECHNICAL DETAILS

Gauge	12 ga
Choke	Multi Choke
Chamber	3" / 76 mm
Flat	Forged Steel
Weight	2.60 KG / 5.73 lbs
Overall Length	37" / 94 cm
Barrel Length	20" / 51 cm
L.O.P	36.5 cm/14.8"
Stock	Fine Turkish Walnut


Santino

TECHNICAL DETAILS

Gauge	12 ga
Choke	Multi Choke
Chamber	3" / 76 mm
Flat	Forged Steel
Weight	2.60 KG / 5.73 lbs
Overall Length	45" / 114 cm
Barrel Length	28" / 71cm
L.O.P	36.5 cm/14.8"
Stock	Fine Turkish Walnut

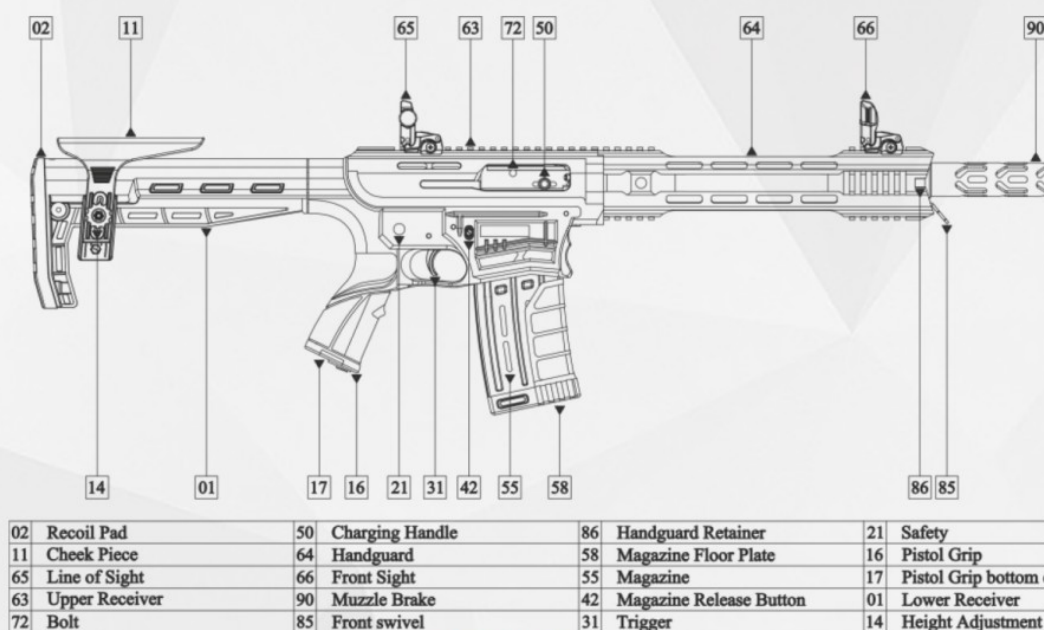

Rocky
TECHNICAL DETAILS

Gauge	12 ga
Choke	Multi Choke
Chamber	3" / 76 mm
Flat	Aliminium
Weight	3.50 KG / 7.71 lbs
Overall Length	47" / 120 cm
Barrel Length	28" / 71 cm
L.O.P	36.5 cm/14.8"
System	Injector & Selector
Stock	Fine Turkish Walnut


Phoenix
TECHNICAL DETAILS

Gauge	12 ga
Choke	Multi Choke
Chamber	3" / 76 mm
Flat	Aliminium
Weight	3.60 KG / 7.93 lbs
Overall Length	47" / 120 cm
Barrel Length	28" / 71 cm
L.O.P	36.5 cm/14.8"
System	Injector & Selector
Stock	Fine Turkish Walnut

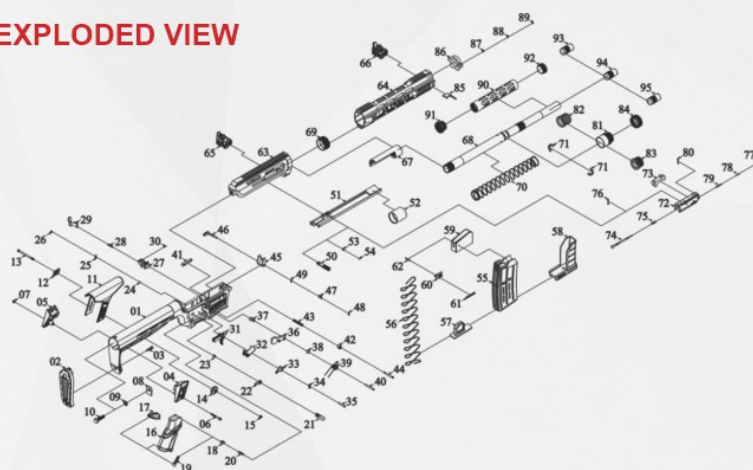
DIAGRAM VIEW

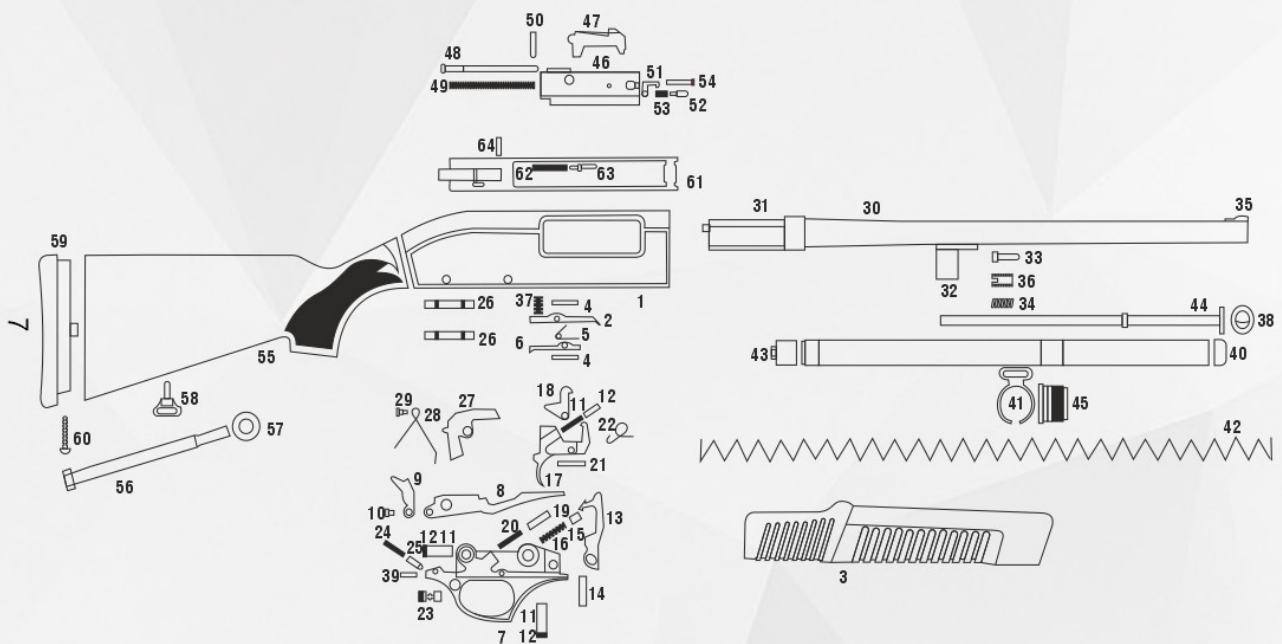


PART LIST

1	Lower Receiver	33	Disconnecter	65	Line of Sight
2	Recoil Pad	34	Disconnecter Spring	66	Front Sight
3	Recoil Pad Screw	35	Trigger pin	67	Barrel Extension
4	Cheek Piece right retaining plate	36	Hammer	68	Barrel
5	Cheek Piece left retaining plate	37	Hammer Spring Outer Bushing	69	Barrel nut
6	Right retaining plate screw (cheek piece)	38	Hammer Spring Inner Bushing	70	Operation spring
7	Left retaining plate screw (cheek piece)	39	Hammer Spring	71	Gas System Retainer Ring
8	Butt Stock Fixing Plate	40	Hammer Pin	72	Bolt
9	Butt Stock Fixing Washer	41	Magazine Release	73	Locking Block
10	Butt Stock Fixing Screw	42	Magazine Release Button	74	Firing Pin
11	Cheek Piece	43	Magazine Catch Spring	75	Firing pin spring
12	Cheek Piece Setting Plug Nut	44	Magazine Release Screw	76	Firing pin retaining pin
13	Cheek piece retaining screw	45	Feed Ramp	77	Extractor
14	Height Adjustment nut	46	Feed Ramp Lever	78	Extractor pin
15	Cheek piece retaining nut	47	Feed Ramp Retainer	79	Extractor pin spring
16	Pistol Grip	48	Right Retainer Spring (Feed Ramp)	80	Extractor Retaining Pin
17	Pistol Grip bottom cover	49	Left Retainer Spring (Feed Ramp)	81	Gas Block
18	Pistol Grip Assembly Nut	50	Charging Handle	82	Standard Velocity Piston
19	Pistol Grip Screw	51	Bolt Carrier	83	High Velocity Piston
20	Pistol Grip Washer	52	Bolt Carrier Tube	84	Gas Cylinder Locking Ring
21	Safety	53	Charging Handle ball bearing spring	85	Front swivel
22	Safety Selector	54	Charging Handle Ball Bearing	86	Handguard Retainer
23	Safety Selector Screw	55	Magazine	87	Handguard Retainer Spring
24	Safety Ball Bearing	56	Magazine Spring	88	Hand Guard Retainer Pin
25	Safety Spring	57	Magazine Spring Stand	89	Hand Guard Retainer Screw
26	Safety Spring Screw	58	Magazine Floor Plate	90	Muzzle Brake
27	Bolt Catch Body	59	Magazine Follower	91	Muzzle Brake Rear nut
28	Bolt Catch Spring	60	Last Round Hold Open Tab	92	Muzzle Brake Front nut
29	Bolt Catch Button	61	Retention Spring	93	Full Choke I
30	Bolt Catch Pin	62	Roll Pin	94	Modified Choke III
31	Trigger	63	Upper Receiver	95	Skeet/Cylinder Choke IIIII
32	Trigger Spring	64	Handguard		

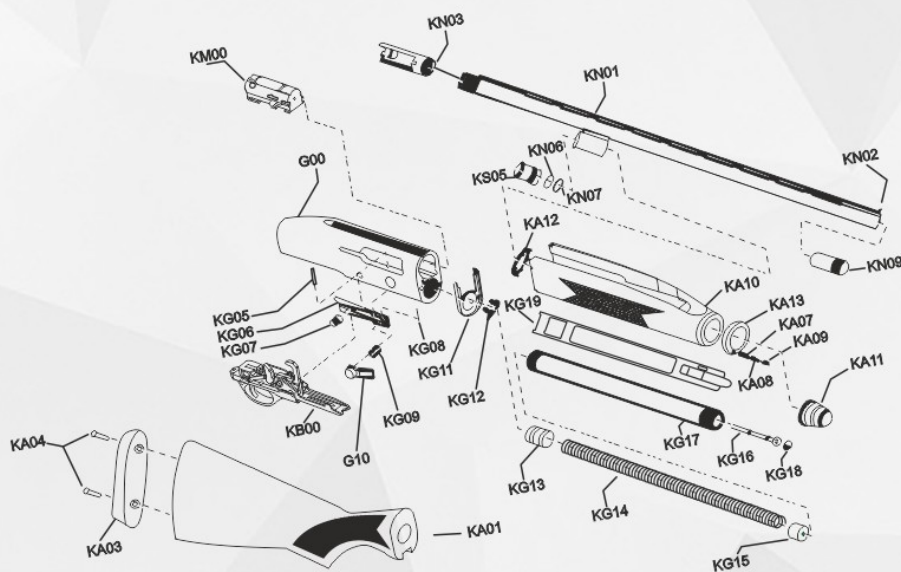
EXPLODED VIEW





PART NO	DESCRIPTION	PART NO	DESCRIPTION
1	RECEIVER	33	PUMP RING PIN
2	CARRIER LATCH	34	PUMP RING SPRING
3	FORE-END	35	BEAD
4	CARRIER LATCH PIN	36	PUMP RING SCREW
5	CARTRIDGE HOLDER SPRING	37	METAL HOLDER SPRING
6	CARTRIDGE HOLDER	38	PLUG CAP
7	TRIGGER GROUP	39	SAFETY PIN
8	CARTRIDGE CARRIER	40	MAGAZINE UPPER CAP
9	CARTRIDGE LIFTER	41	SLING SWIVEL
10	CARTRIDGE LIFTER PIN	42	MAGAZINE SPRING
11	INTERNAL SAFETY SPRING	43	CARTRIDGE EJECTOR PUG
12	INTERNAL SAFETY SPRING CASE	44	PLUG
13	HAMMER	45	MAGAZINE BOLT CAP
14	HAMMER PIN	46	BOI ACTION
15	HAMMER PIN CAPSULE	47	LOCKING BLOCK
16	HAMMER SPRING	48	FIRING PIN
17	TRIGGER	49	FIRING PIN SPRING
18	INTERNAL SAFETY	50	FIRING PIN HOLDER
19	INTERNAL SAFETY CAPSULE	51	EXTRACTOR
20	INTERNAL SAFETY SPRING	52	EXTRACTOR PIN
21	TRIGGER PIN	53	EXTRACTOR SPRING
22	TRIGGER SPRING	54	EXTRACTOR SPRING PIN
23	SAFETY	55	GRIP
24	SAFETY SPRING	56	HEAT SHIELD
25	SAFETY CAPSULE	57	HEAT SHIELD SCREW
26	CAPSULE PIN	58	SLING SWIVEL
27	UNLOADING LATCH	59	GRIP KEY
28	UNLOADING LATCH SPRING	60	GRIP SCREW
29	UNLOADING LATCH SPRING SCREW	61	SLIDING BAR
30	BARREL	62	SLIDING BAR SPRING
31	BARREL LUG	63	SLIDING BAR PIN
32	PUMP RING	64	SLIDING BAR RIVETING PIN

GENERAL ASSEMBLY



12 GA. GENERAL ASSEMBLY - PART LIST

Stock No	Description	Stock No	Description
KB00	TRIGGER GROUP ASSEMBLY	KA04	RUBBER RCOIL PAD SCREW
KG00	RECEIVER	KA07	FORE-END BLOCKER SPRING
KG01	RECOIL SPRING TUBE	KA08	FORE-END BLOCKER
KG03	RECOIL SPRING	KA09	FORE-END BLOCKER SCREW
KG04	RECOIL SPRING CAP	KA10	WALNUT FORE-END
KG05	CARRIER LATCH PIN	KSA10	SYNTHETIC FORE-END
KG06	CARRIER LATCH	KA11	FORE-END NUT
KG07	CARRIER LATCH SPRING	KA12	FORE-END PINNED PLATE
KG08	CARRIER LATCH BUTTUN PIN	KA13	FORE-END PLATE
KG09	CARRIER LATCH BUTTUN SPRING	KN01	BARREL
KG10	CARRIER LATCH BUTTUN	KN02	FRONT SIGHT
KG11	FORE-END LATCH	KN03	BREECH
KG12	FORE-END LATCH SCREW	KN07	GAS HOLE O-RING
KG13	MAGAZINE LOGN SPRING CUP	KN09	CHOKE TUBE
KG14	MAGAZINE SPRING	KN10	GAS HOLE JOINT
KG15	MAGAZINE SHORT SPRING CUP	KN11	GAS HOLE PLUG
KG16	MAGAZINE PLUG	KS05	PISTON
KG17	MAGAZINE TUBE	KS06	PISTON O-RING
KG18	MAGAZINE PLUG BLOCKER	KS07	PISTON RING
KG19	ACTION BAR		
KA01	WALNUT STOCK		
KSA01	SYNTHETIC STOCK		
KA03	RUBBER RECOIL PAD		

PROFESSIONAL SHOTGUN



SET ARMS

setarms.com

SET ARMS

Headquarters:

Dalyan Mah. Ali Muslu Cad. Artemis İş Mrk. No: 2/B 105 Beyşehir / KONYA / TURKEY

Office Address:

Fevziçakmak Mah. 10501 Sk.No: 44/A Karatay / KONYA / TURKEY

Factory Address:

Üzümlü Kayabaşı Mh. No:38 Beyşehir / KONYA / TURKEY

Phone: +90 553 262 90 93 (Whatsapp)

Export Department: +90 543 452 65 73 (Whatsapp)

export@setarms.com ibrahim@setarms.com



www.setarms.com

@ instagram.com/setarmscompany